



# bricco&charge

## Creating new space for charging

The more flexible arrangement of the power and control elements of this charging solution resulted from the requirements in bus and truck garages. Due to the close arrangement of the fully occupied parking spaces, there is no floor space for free-standing charging stations available, while the parking time should be utilized to recharge the vehicles. The control technology is placed above the parking vehicles, the power technology in a more remote technical service space.

The housing of the output terminal was designed to be mounted on the ceiling. The charge level of the connected battery is large and clearly visible from afar. Therefore there are no user functions at the output terminal, charging starts automatically after plugging in if the connection and safety check with the vehicle have been successful. If additional user guidance is desired, this could be done via a connected computer or a screen for the operators (HMI).

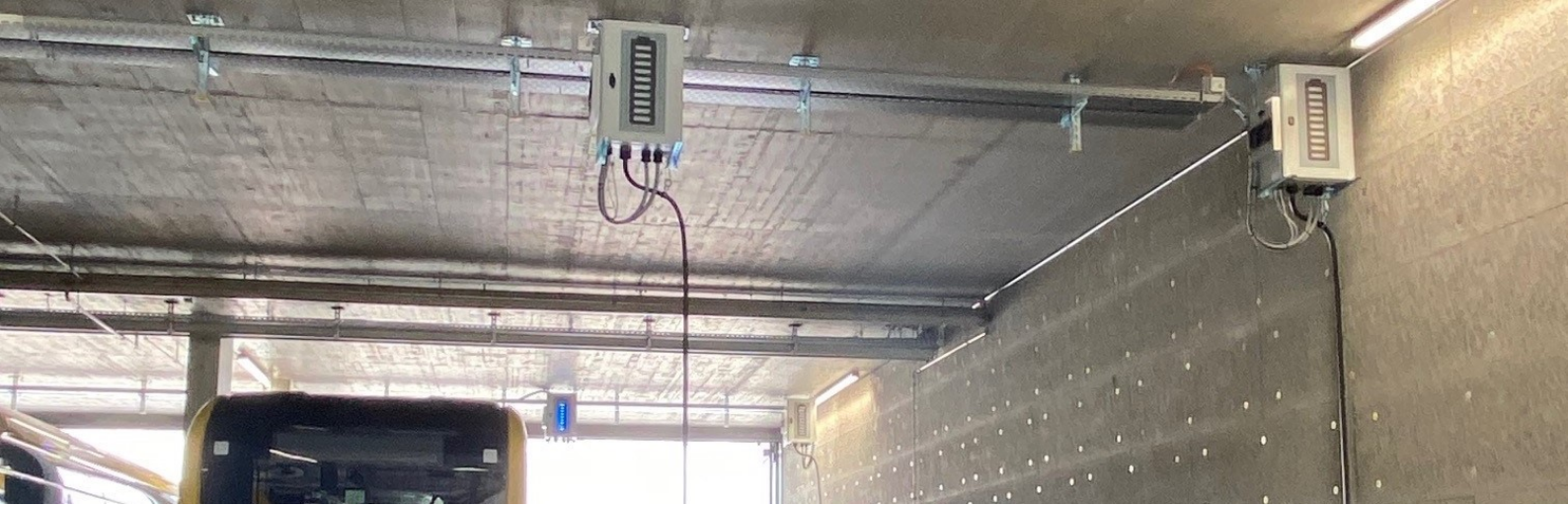
## Charging solution for parking spaces of trucks, busses or cars

The solution is therefore useful for all vehicle fleets that need to be charged quickly when space is scarce, especially in basements, garages or other spatial situations that do not have enough space for assigning additional “publicly” accessible quick charging stations.



## Bricco Corretto system

The housing parts of the bricco&charge are industry standard, easily accessible and repairable or replaceable in the event of accidents or damage. The interconnection of up to two bricco&charge output terminals with a corretto&charge power cabinet enables outputs of up to 2 x 192kW and charging voltages of 200 to 920V.



## Application-optimized solution

The Bricco Corretto system is created at our development and production site in Kriens-Obernau. With regard to safety and product quality, it corresponds to European standards and the experience from these special applications is continuously incorporated into the product. The charging solution has been tried and tested for everyday use and can be accessed by us via remote maintenance. On request, it can be professionally maintained on site by our team.



- Up to 100m distance from plug to power cabinet
- Easy to read status indication
- Network based communication

Charger bricco&charge	
DC plug	CCS-Type2, IEC 62196-3
DC charge power	192kW
DC safety	Short circuit protected, Overcurr. circuit breaker, Over-voltage protection, Low-voltage protection, Isolation monitoring, Earth monitoring
DC output current	200A
DC charge cable air cooled	CCS2: 300A Peak 200A continuous current
DC output voltage	150-920V DC
DC input	HV+, HV- 2xHV+, 2xHV- with each max. 150mm <sup>2</sup> maximal voltage drop on input lines 3V
AC grid connection	L, N, PE, 230V ±10%, 50/60Hz
AC grid current	6A
Combined Charging System (CCS2)	DIN 70121, ISO 15118, Plug IEC 62196-3
Variants	1in1: CCS2 other variants on request
charge cable	cable length: standard 5m
Screen / HMI	10-segment RGB status indication state of charge and system state in real time
Communication / interface	OCPP 1.5, OCPP 1.6, OCPP 2.0 (ready), JSON / SOAP, Ethernet-Port, GPRS, UMTS, LTE
Environment / Vandalisms	IP 54 and IK 08
Operating temperature	-20°C up to +45°C
Storage	-40°C up to +85°C with RF 5% bis 95% (non condensing)
Max. noise level	45dB(A) in 1m
EMC	EN 61000-6-1, -2, -3, -4
Conformity	EN 61851-1, -22, -23; EN 62479; EN55011 + A1
Over voltage	In corretto&charge type 2 + type 3 / Class II Optional: type 1 + type 2+ type 3 / Class I + Class II
Efficiency	98% (@500V) 99% (@920V)
Mounting	Ceiling Wall-mount
Dimensions (D x W x H)	259 x 446 x 600 mm (without cable)
Weight	25 kg
Altitude	max 2000 meters above sea level
Suitable power cabinet	corretto&charge

## EVTEC AG

Phone: +41 41 260 88 38

E-Mail: [evtec@evtec.ch](mailto:evtec@evtec.ch)

Web: [www.evtec.ch](http://www.evtec.ch)

## the &chargefamily



### caffè corretto system

Up to 384kW DC charge power with distributed architecture and minimal footprint for dispenser.



### bricco&charge

Up to 2x 192kW DC charge power with distributed architecture for depot applications.



### ristretto&charge

High power charger with up to 384kW DC and voltages up to 920V. Charge 3 vehicles simultaneously.



### cappuccino&charge

64kW DC, including dynamic power charge, Charge 3 vehicles simultaneously.



### move&charge

Plug&play 20kW DC + 22kW AC charge. Optional version with 1000V, available with all DC-plugs.